



EXCAVATOR

BUCKET

MAKE YOUR ENGINEERING EASIER AND FASTER

EMAIL: spain@gf2attachments.com



GF2
ATTACHMENTS



STANDARD BUCKET

Product Features

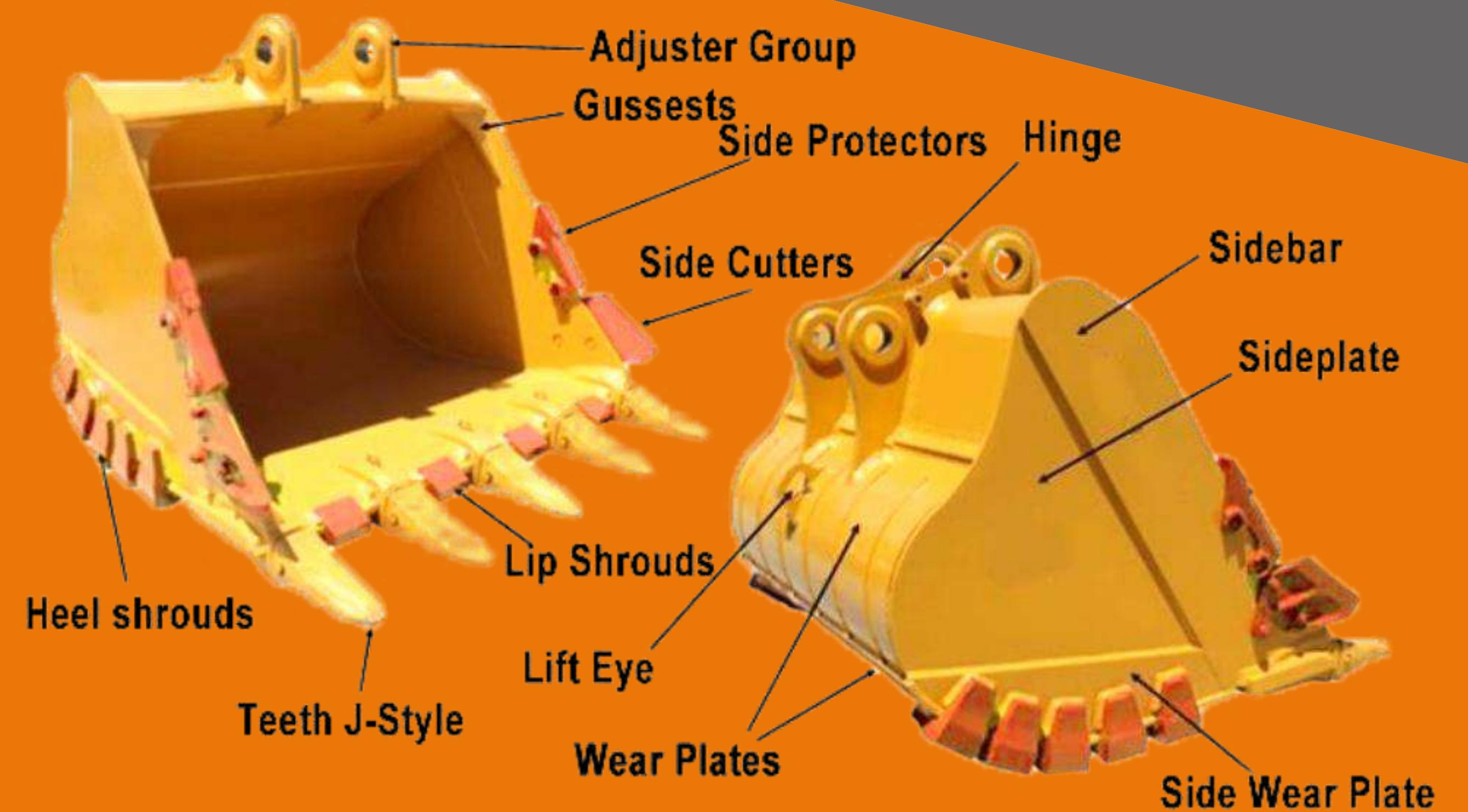
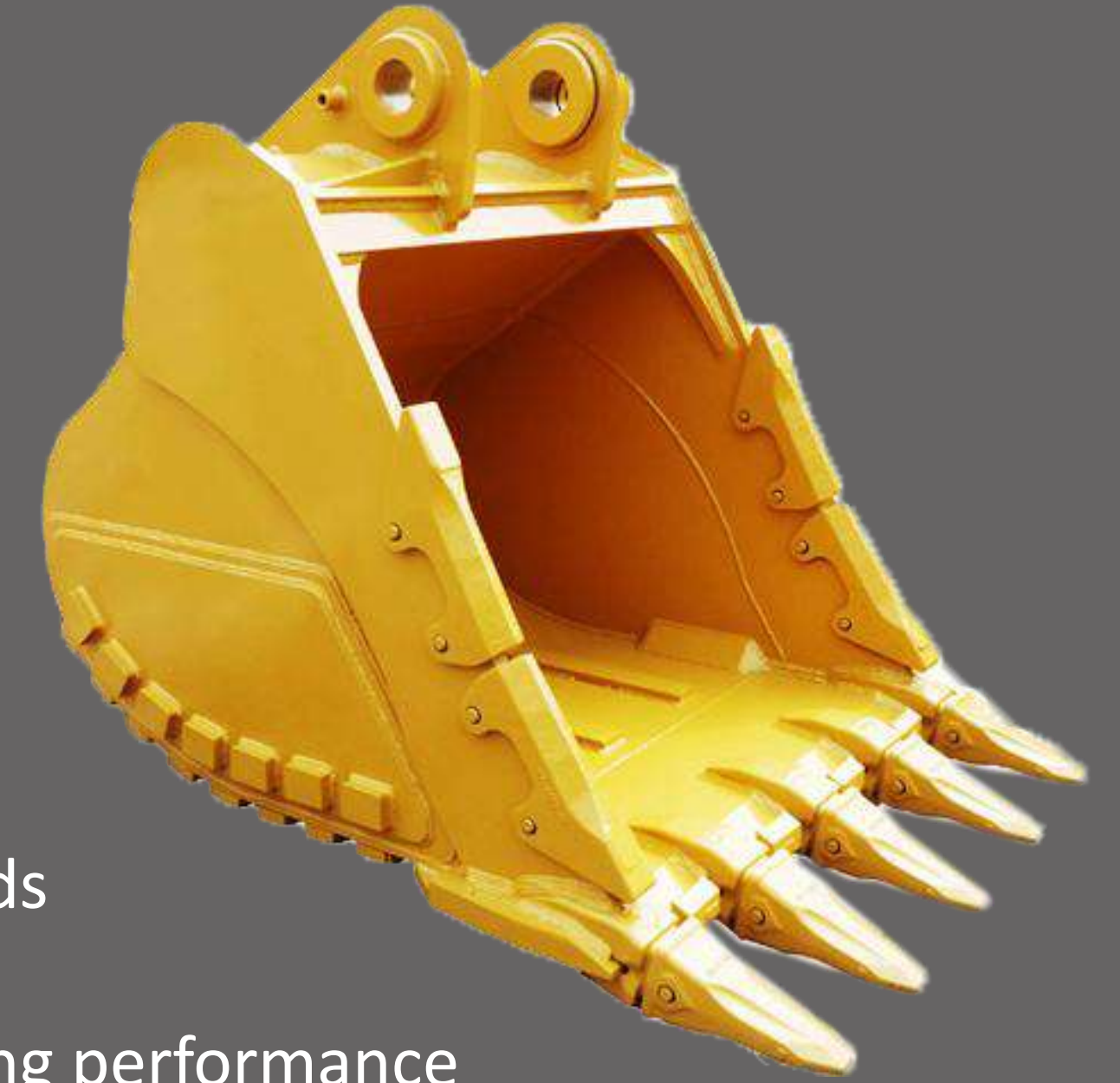
GF2 Standard Bucket is designed for general digging and earth moving purposes. Used for low-impact, easier digging materials such as common earth, sand, and clay. Double radius design to minimize surface traction and max lifecycle time efficiency when loading and unloading the bucket. Tapered bucket design by narrowing the width of the bucket's heel, the material falls out easier because there is less friction during dumping. This also prevents material from packing into the top of the bucket. Manufactured with the use of materials including low alloy carbon steel and wear-resistant steel plate.



ROCK BUCKET

Product Features

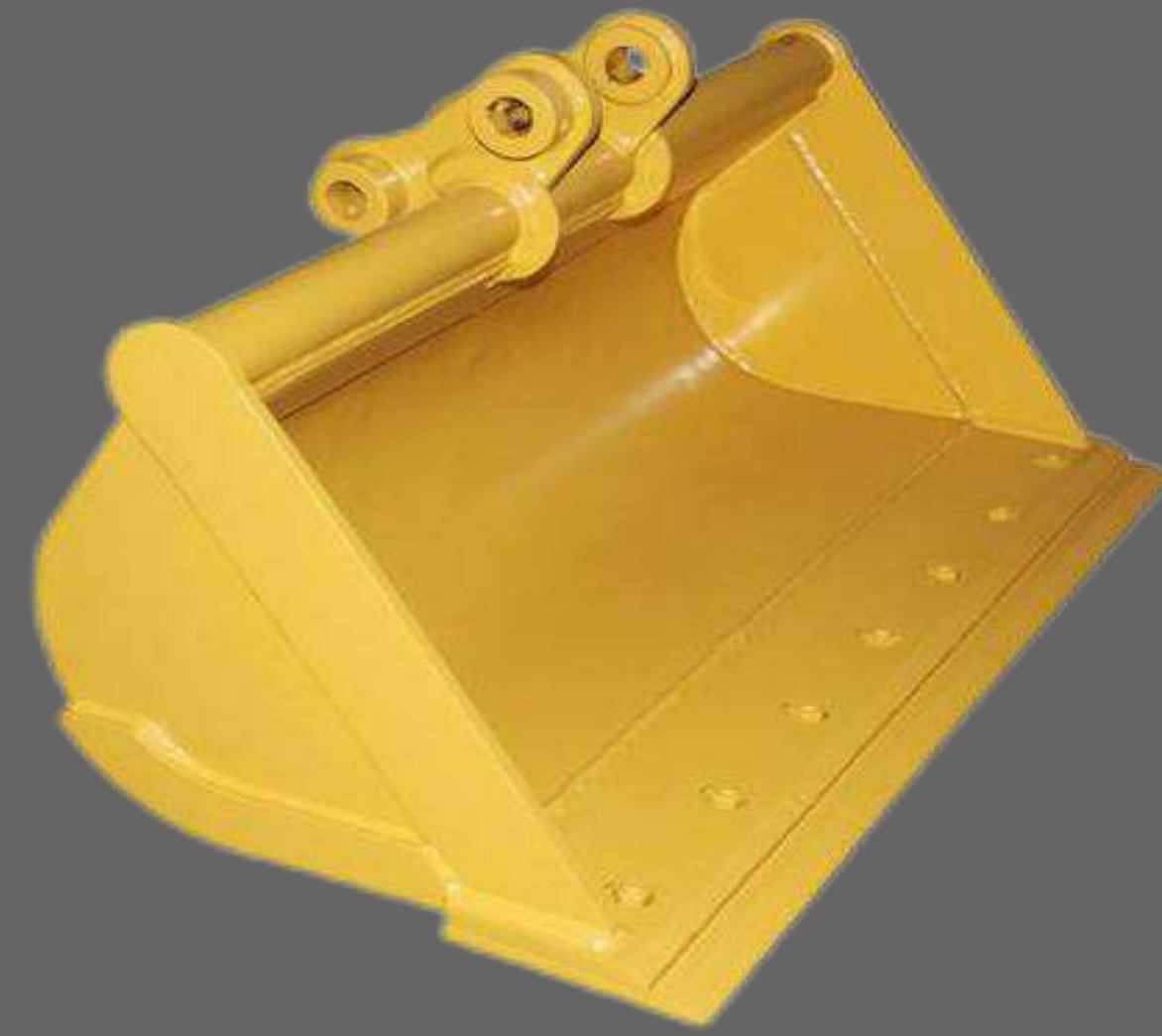
1. Weight class from 1 tonne to 90 tonne
2. Designed to meet Australian Industry standards
3. Formed beam top box construction
4. Tapered bucket wall design for better unloading performance
5. Double radius design increases digging force and decreases bucket drag against the ground resulting in more power at the teeth for easier bucket filling
6. With bottom inner and outer wear strips, lip, wing and heel protection
7. Extra side plate protection
8. Three standard rock bucket types available for different applications
9. Various ground engaging tools available to meet your specifications



CLEANING BUCKET

Product Features

1. Weight class from 1 tonne to 90 tonne
2. Designed to meet industry standards
3. Formed Beam top box construction
4. Manufactured to any width as required
5. Double radius design increases digging force and less bucket drag against the ground resulting in more power at the teeth and easier bucket filling
6. Comes with a reversible bolt-on cutting edge



SKELETON BUCKET

Product Features

1. Formed Beam top box construction
2. Manufactured to any width as required
3. Double radius design increases digging force and less bucket drag against the ground resulting in more power at the teeth and easier bucket filling
4. Reversible bolt-on edge as standard
5. Choice of grid sizing available



TILT BUCKET

Product Features

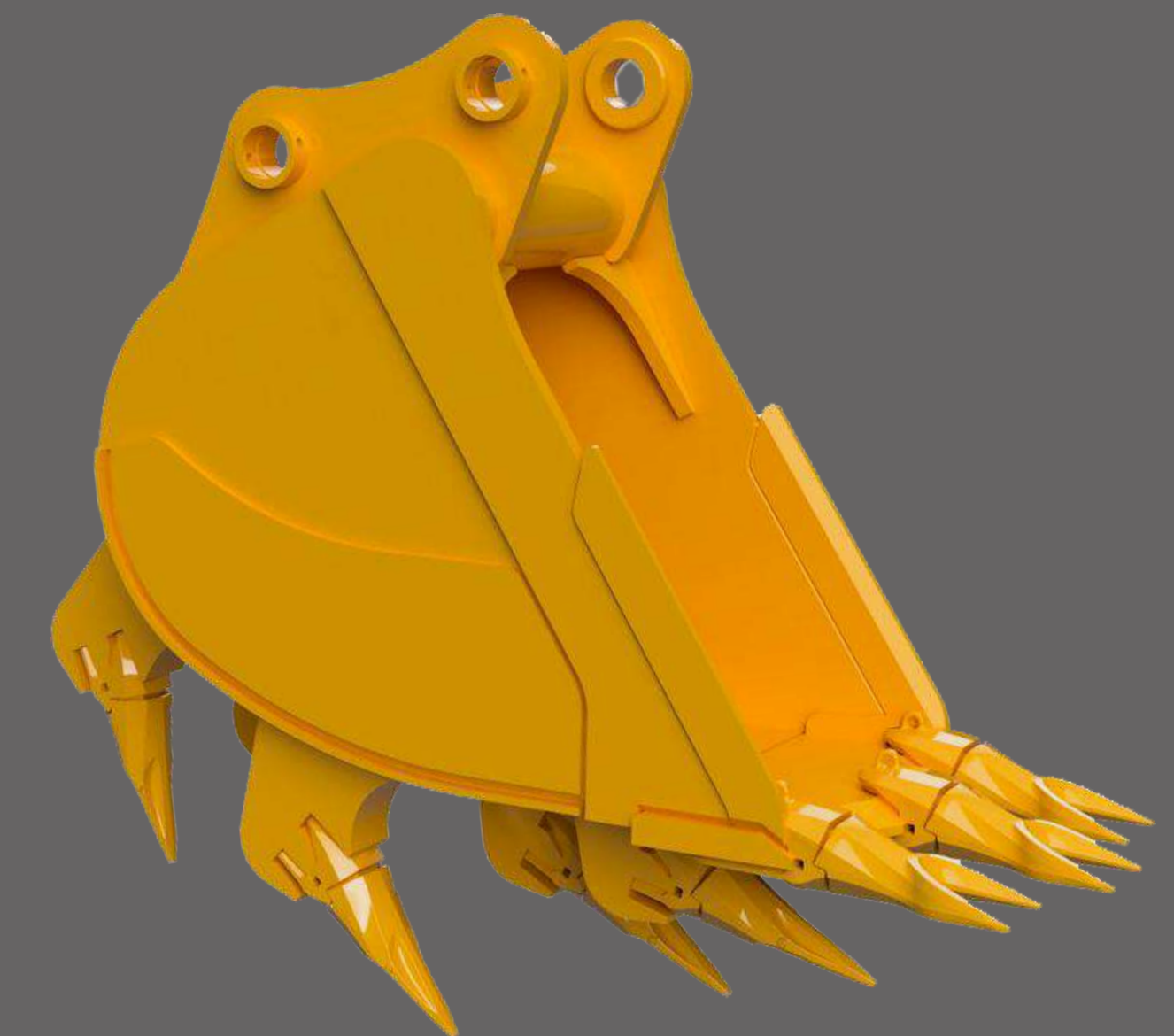
1. Weight class from 1 tonne to 90 tonne
2. Quality cylinders
3. Tilting 45° left and right to tackle any slopes
4. Spill guard
5. Grease-able pivot point
6. Hardened bushes and pivot pin
7. Reversible bolt-on edge as standard



LOOSENING BUCKET

Product Features

High-strength ripping teeth allow excavation and ripping carrying on at the same time. The bucket can be applied to operations of ripping, excavation, and loading of hard soil, secondary-hard stone, and weathered rock.



DITCH BUCKET

Product Features

Mainly used in working environment such as channel river and pool.



RAKE

Product Features

GF2 Rakes are designed as an ideal tool for land clearing, gathering demolition debris, or sorting material. It can help you clear more land within less time.



BUCKET CLAMP

Product Features

GF2 Buckets Clamp for excavators are versatile and able to tackle many types of jobs. With this grapple bucket attachment, you are able to dig, move many different kinds of materials, skim ground cover, and smooth large areas at once, and so much more. This excavator bucket attachment allows you to easily tackle all of your landscaping projects.



RIPPER

Product Features

GF2 Ripper makes digging in hard soil more easily and more productively, it is a perfect attachment to cut through any hard terrain.



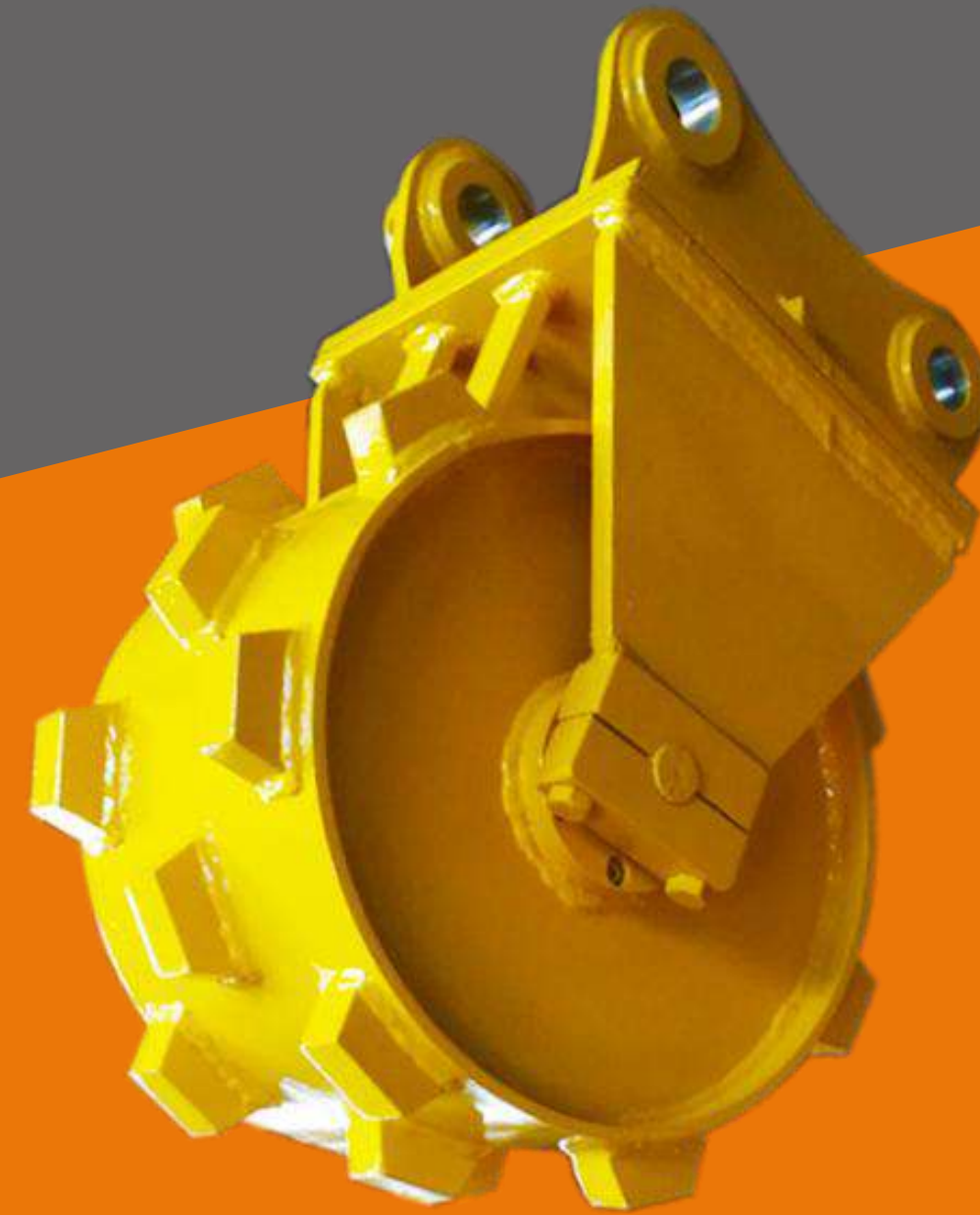
THUMB CLIP



Product Features

Mechanical thumb is welded directly on the forearm, using the tandem pin to adjust the angle. Hydraulic integrated thumb requires a foot valve or handle to control. The cylinder is equipped with a piston protection device. The hydraulic thumb is easy to install and the angle can be adjusted according to the needs.

COMPACTION WHEEL



Product Features

GF2 Compaction wheels are mainly used for trench compaction, which is faster and more efficient than vibrating machines. They can do more with less wear. Vibratory compactors are compacted from the top down and are a single flat surface, leaving unbroken clay or soil with voids around it. The compaction wheel works from the bottom up, removing clods while breaking up soil and filling voids.



CLAMSHELL BUCKET



Product Features

Ideal for earth moving, groundworks, and road construction we have a range of shells available for different applications.

Applications: Apply to groove, Such as the foundation ditch limited, space mining and mud, sand, coal, gravel loaded, and can also be used to ship, train, automobile loading and under loading the above material.

ROTARY SCREEN BUCKET

Product Features

1. Reliable structural design
2. Easy maintenance
3. Can work underwater
4. Easy operation
5. Effective with wet material
6. Applicable to materials of different sizes



CRUSHING AND SCREENING BUCKET



CRUSHER BUCKET

Product Features

1. Simple operation and maintenance
2. Contains HARDOX material, efficient and durable
3. High productivity
4. Save time and reduce costs
5. Crushing jaw plate is easy to replace
6. Particle size adjustment without special tools



Product Features

1. Low maintenance
2. 24 months of warranty
3. Screening option from 8-50mm
4. It can be used on Excavators or Loaders
5. Imported motor-Italian Danfoss
6. High strength blades-Hardox 600
7. Integrates screening, crushing, mixing, gas explosion, and loading



MATERIAL

Many types of steel plates are available: Q345, NM400, HARDOX, etc.
The material will be quality-inspected when they are delivered to the workshop.

WELDING

We use a Panasonic carbon dioxide gas shielded welding machine by multi-layer welding. The adapter and blade edge are both through preheat and before welding with flux-cored wire. Experienced welders are technically skilled with double hands which makes the weld seam achieve a graceful fish scale shape.

HEAT TREATMENT

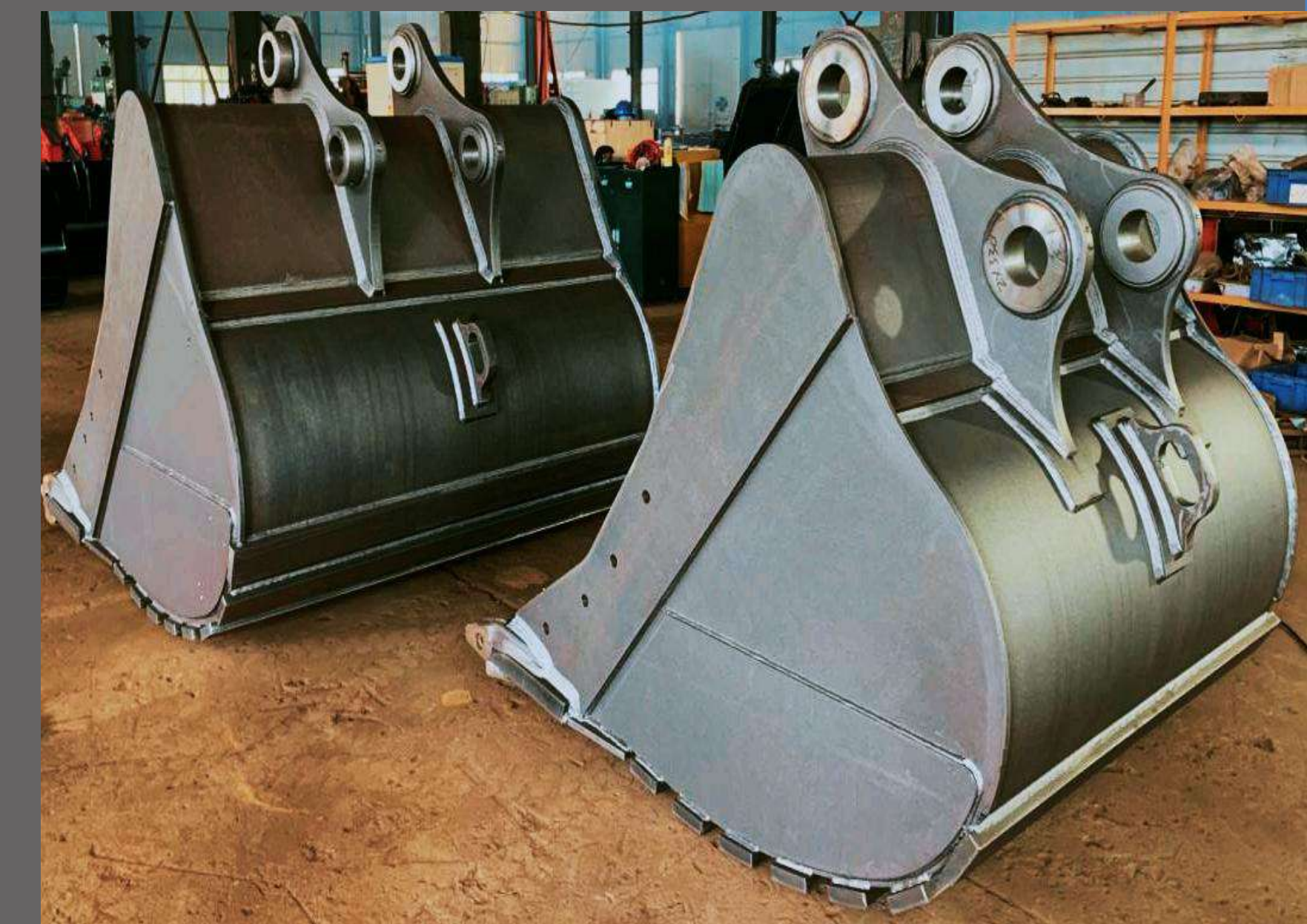
The whole bucket adopts heat treatment technology to eliminate stress and greatly improve the rigidity, hardness, wear resistance, fatigue strength, and toughness of steel so that the overall quality of the bucket is greatly improved.

SHOT BLASTING

- Step1. Remove the surface oxide layer
- Step2. Remove welding flow
- Step3. Increase paint adhesion

SPRAY PAINT

Primer and finish paint multi-layer anti-rust spray paint, more delicate appearance.



◀ Related Products

Drilling Piling Series



EARTH AUGER



VIBRO HAMMER



SIDE GRIP VIBRO HAMMER

Breaking demolition series



HYDRAULIC CRUSHER



FIXED PULVERIZER



ROTATION PULVERIZER

Grab series



HYDRAULIC GRAPPLE



STEEL SCRAP GRAPPLE



DEMOLITION GRAB



VIBRO RIPPER



EAGLE SHEAR



PILE BREAKER

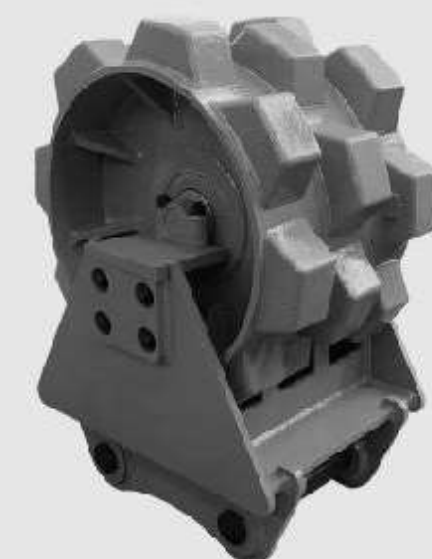
Compaction series



HYDRAULIC COMPACTOR



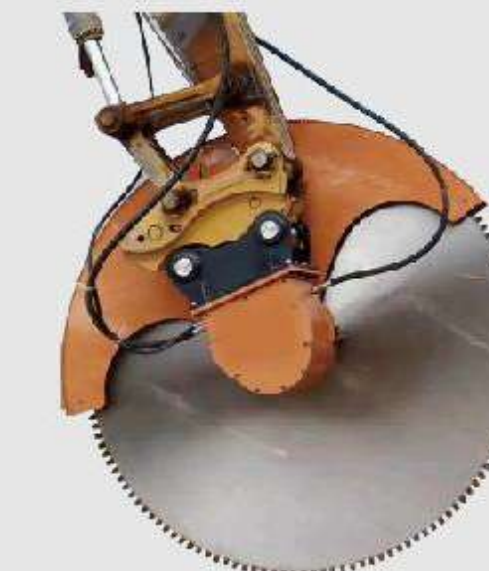
COMPACTION WHEEL(CUSTOMIZE)



COMPACTION WHEEL



DRUM CUTTER



ROCK SAW



CRUSHER BUCKET

Connection series



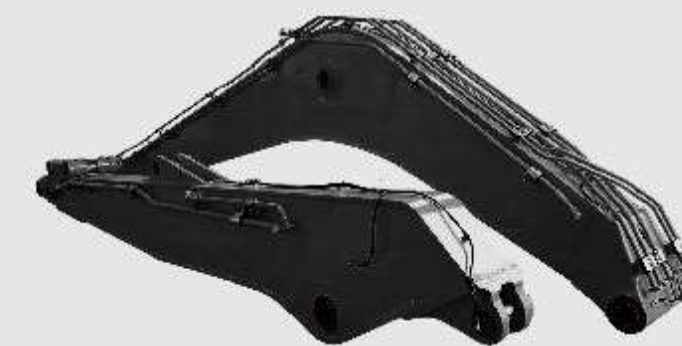
QUICK HITCH



MULTI HITCH



TILTING HITCH



LONG BOOM

Buckets series



TILT BUCKET



ROTARY SCREEN BUCKET



ROCK BUCKET



STANDARD BUCKET